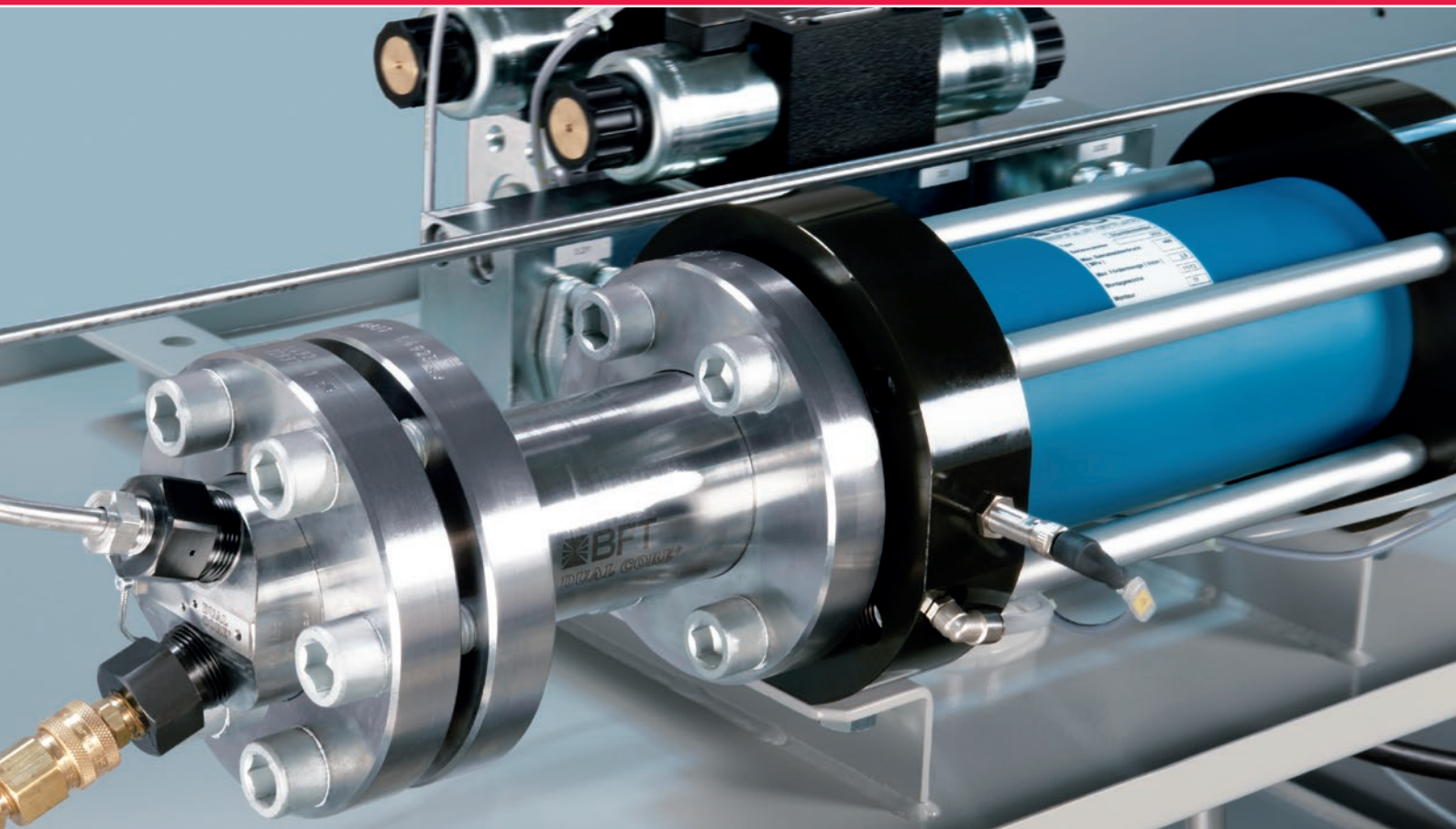


Best Fluid Technology

HIGH PRESSURE PUMPS



... for waterjet cutting
SERVOTRON®



BFT, ONE OF THE WORLD'S LEADING SUPPLIERS OF HIGH PRESSURE PUMP SYSTEMS, PRESENTS

SERVOTRON®. THIS PUMP OPENS A NEW DIMENSION FOR YOUR WATERJET APPLICATIONS!

SERVOTRON® HIGH PRESSURE PUMPS ARE CHARACTERIZED BY THE FOLLOWING FEATURES:

THE BASE

Generally in mechanical engineering the term "servo" refers to a mechanism the purpose of which is to convert a small effort into a large effect with the aid of external energy. In electrical engineering a "servo" is considered to be a combination of a control and a drive unit. This knowledge is transferred to our high pressure pump series SERVOTRON® and due to this an environmentally friendly and energy efficient unit has been created.

DYNAMIC CONTROLS AND ENERGY EFFICIENCY

With the new SERVOTRON® type high pressure pump, this principle has been inverted. A gear pump with a constant flow rate is connected with a highly dynamic, frequency-controlled servo drive. In approximately 60 milliseconds, the motor is accelerated from zero to up to 2,700 rpm. This drive concept has a decisive advantage, i.e. improved energy efficiency! In comparison with asynchronous motors, the efficiency of this new drive concept with a frequency-controlled servo drive is approximately 15% higher.

OIL FILTERING AND COOLING

The hydraulic oil is cooled by either an oil/air or an oil/water heat exchanger. Oil filtering and cooling take place in a separate and constant oil circuit. The excellent oil quality this achieves has a positive influence on operational safety and the life expectancy of the whole hydraulic system. In case of higher ambient temperatures a dual cooler with serial combined oil/air and oil/water cooler is available as option.

OPTIMUM FEED WATER SUPPLY

The installed booster pump, together with double filter unit with 5 µm and 1,2 µm, guarantees optimum feed water supply for the high pressure pump.

THE INTENSIFIER - THE CORE PIECE

The patented high pressure sealings and check valves in the intensifier are characterized by a long life expectancy. Besides the special stainless steels developed specifically for this application, the shrunk high pressure cylinder help to achieve this. In the DUAL CORE® technology two cylinders are shrunk into each another and the inner cylinder is autofrettagged in addition. For the multi-shift use of the pump, a stand-by intensifier is available as option.

SIMPLE MAINTENANCE

Thanks to the special flange design and externally accessible check valves, the intensifier is easy to maintain. Wearing parts like high pressure seals and check valves can be replaced quickly and easily.

LONG LIFE EXPECTANCY AND HIGH OPERATING SAFETY

The pump is equipped with a large volume accumulator. Due to the combination of highly dynamic servo drive unit and an accumulator volume of 2.5 liters, the pressure fluctuation in the high pressure system is +/- 1% only. This protects the whole high pressure system, prolongs the life time of high pressure sealings and check valves and also has a positive effect on the cutting result.

OPTIMIZED PRESSURE PROFILE

When switching the cutting valve on and off there is practically no pressure overload. The integral pressure transducer measures the actual operating pressure value so that if necessary it can be immediately adjusted. This means a significant reduction of pressure fluctuations within the pump and simultaneously a longer service life for all the high pressure components located between the high pressure pump and the cutting head.

BLEED DOWN VALVE IN HIGH PRESSURE LINE

A bleed down valve is fitted to the pump's high pressure line. The valve is pneumatically controlled and actuated via the stop button or the emergency stop circuit. It can also be controlled externally; this means you can set the pressure as needed, e.g. for the piercing process with abrasive waterjet.

TOUCH SCREEN CONTROLS.

The pump is touch screen controlled. The operating pressure of SERVOTRON® high pressure pump is continuously adjustable between 10 and 400 MPa. All warnings and monitoring functions are displayed in clear text. Operating data are logged and can be accessed via the display. In addition, the pump has a diagnostic system and an electronic log book. Data and operating life of the individual components can be read via an USB port.

REMOTE CONTROL SUPPORT

All important functions can be remotely controlled via client access. External connectors are available for start/stop, emergency stop circuit, bleed down valve, malfunction and operating messages. Operating pressure setting is done via 0 to 10V signal.

On request, multiple-voltage and multiple-frequency motors are available for SERVOTRON® series high pressure pumps.

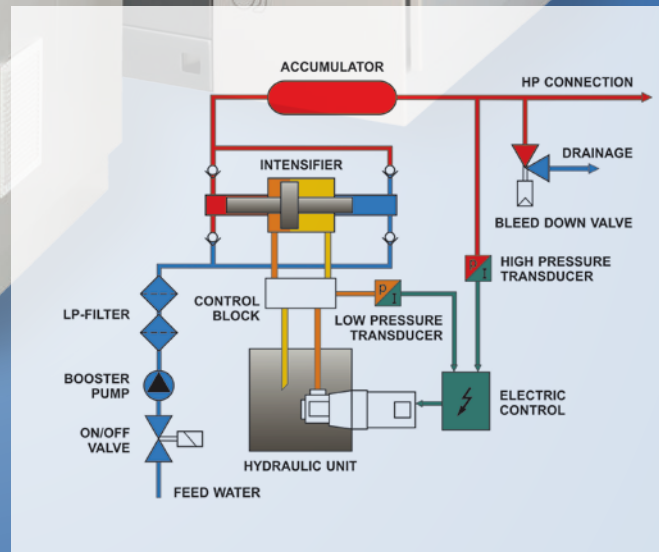
SERVOTRON®

MORE THAN
24%
ENERGY
SAVINGS!



SERVOTRON® HIGH PRESSURE PUMPS

are built in compliance with Safety of Machinery Directive 98/37/EG and the Pressure Equipment Directive 97/23/EG. The declaration of conformity is included with the documentation.



System diagram for high pressure pump SERVOTRON®



Highly dynamic, frequency-controlled hydraulic unit with servo drive and internal gear pump, dual version for higher flow rate.



Excellent accessibility, easy to maintain and optimum operation.



Feed water supply with booster pump and double filter unit.



Control box with electric components and frequency controller.

Technical Data		SERVOTRON® 40.37	40.45 [⊕]
Power supply, main motor	kW	37.0	45.0
Auxiliary unit, oil/air cooler	kW	1.1	1.1
Auxiliary unit, booster pump	kW	0.46	0.46
Flow rate, max.	l/min	3.8	4.6
Design pressure	MPa	420	420
Permissible operating pressure, max.	MPa	400	400
Double strokes, max.	min-1	35	40
Intensification ratio		1:21.78	1:21.78
Accumulator, volume	l	2.49	2.49
Oil tank volume	l	95	95
Ambient temperature with oil/air cooler	°C	10-35	10-35
Ambient temperature with oil/water cooler	°C	10-45	10-45
Average water consumption with oil/water cooler	l/min	9.0	10.0

Supply lines

Water inlet		1/2"	1/2"
Water pre-pressure, min./max.	MPa	0.1-2.5	0.1-2.5
Drainage connector		3/8"	3/8"
High pressure connector for HP tubes 3/8"		M20x1.5	M20x1.5
Pneumatic pressure, min./max.	MPa	0.55-0.70	0.55-0.70
Pneumatic connection for hose		3/8"	3/8"
Supply voltage	V	400	400
Frequency	Hz	50	50
Current, back-up fuse (400V/50 Hz)	A	80.0	100.0
Protection type, control box		IP55	IP55
Protection type, all other components		IP54	IP54

Miscellaneous

Width	mm	1,950	1,950
Depth	mm	970	970
Height	mm	1,400	1,400
Total weight (without auxiliaries)	kg	960	970
Sound level, max.	dB(A)	≤78	≤78
Coating		silver/gray	

Subject to technical alterations

THE ADVANTAGES OF SERVOTRON® HIGH PRESSURE PUMP AT A GLANCE:

OUR PERFORMANCE/YOUR BENEFIT

- Driven by highly dynamic, frequency-controlled servo drive
More than 24 % energy savings – certified by TUV
- Reduced operating temperature in the oil circuit
Less cooling power required, extended life time of hydraulic components
- Soft starter for starting the high pressure pump
Reduced current consumption during starting of pump
- Continuous pressure adjustment from 10 to 400 MPa
Increased range of application for the complete cutting unit
- Practically no pulsation at piercing
No damage at brittle materials, starting at 10MPa
- Minimal pressure fluctuation, not more than +/- 1% at full load
Increased life time of high pressure components and improved cutting quality
- No pressure overload and minimal pressure drop at on/off mode of cutting head
Prevents the complete high pressure system, from the pump to the cutting head
- At closed cutting head, no current consumption at servo drive
Reduced current consumption and increased energy efficiency
- Logbook integrated in control
Simplified handling, export of operating data via USB port
- Client connection via network cable
Take over of pump control into the control of cutting system



A Member of Dr. Aichhorn Group

BFT GmbH
 Industriepark 24
 8682 Hoenigsberg, Austria
 Phone: +43-3862-303-303
 Fax: +43-3862-303-304
 Email: info@bft-pumps.com
 Internet: www.bft-pumps.com

BFT GMBH
 IS MEMBER OF:

